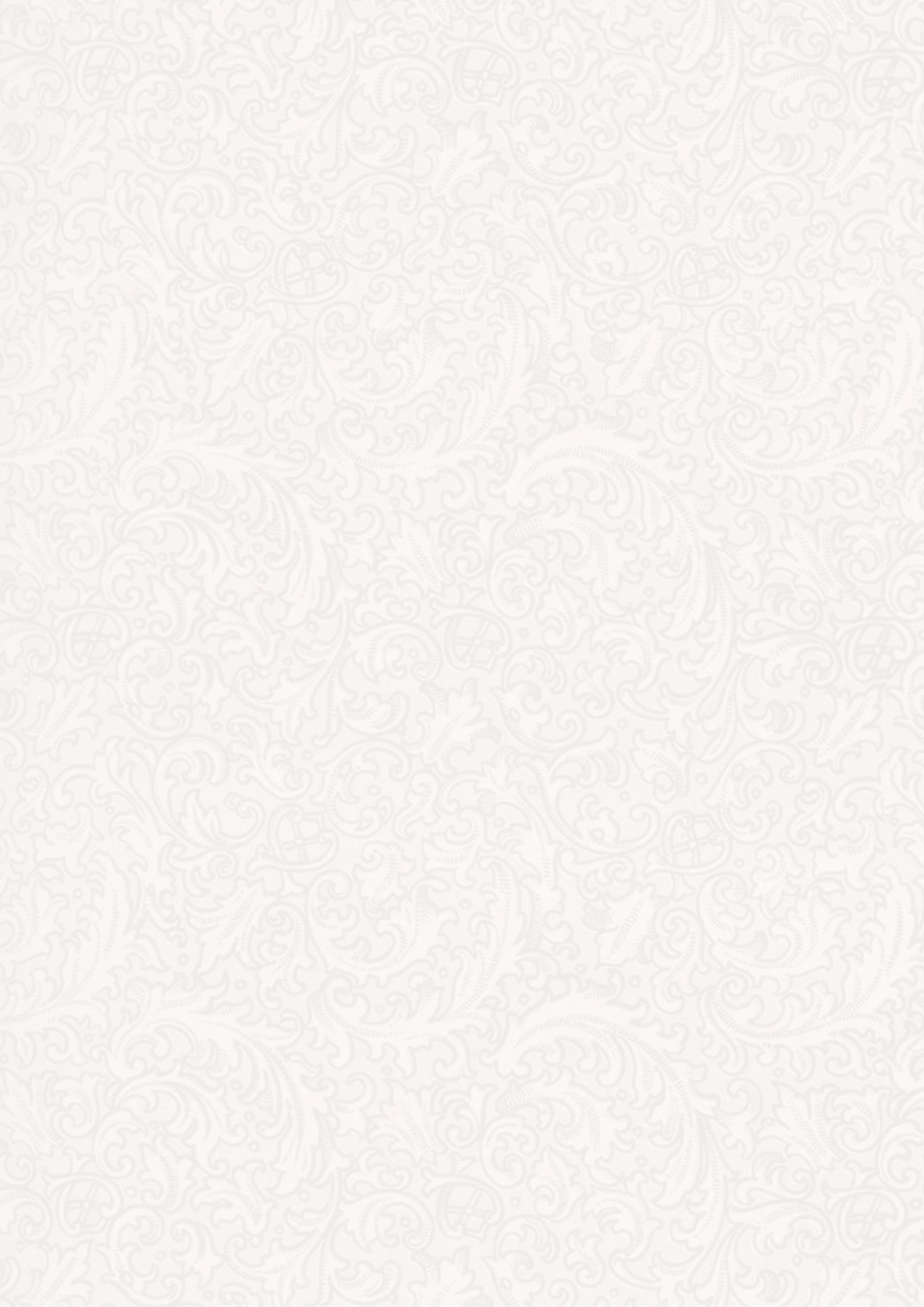




Consort Style Guide



Introducing the new Double Sided stove range



Contents



Consort 4	2
Consort 5	4
Compact 5	6
Slimline 5	8
Derwent	10
 Inset - Consort Inset 5 & 7	 12
 Slimline 9	 14
Consort 7	16
Consort 9	18
Consort 15	20
 Consort 4 Double Sided (NEW)	 22
Consort 7 Double Sided (NEW)	24
Consort 9 Double Sided (NEW)	26
 Cleanburn technology & technical specifications	 28-34
 FAQs	 35
 Techical key	 36
 Parkray range options	 38



Baby, it's cold outside...

Shake the mud off your boots, come in and light a fire - this compact stove is perfect for intimate moments



Where space is tight, or you want to create an intimate atmosphere, the Consort 4 is simply perfect. This multi-fuel stove is small in stature, but big on heat. It fits into the smallest of spaces with no need for an air brick (see FAQs), becoming a real feature of any room. You may be surprised by the heat output from the Consort 4 once it gets going! We've packed a lot into this small stove: the airwash directs warmth over the inside of the door (keeping the glass clean), and our special 'Cleanburn' technology makes it as kind to the environment as it is to you. So you can pile up the logs without worrying about the atmosphere. As for romantic moments... plan for plenty of those, too.



Consort 4 with single door

See Technical Key - page 36 for more info.



There's a designer in the room ...

The compelling Consort 5 has a sleek designer look. Stylish, neat and compact, it's available in three coloured finishes



This traditional stove has clean lines and modern features – like Cleanburn technology to deliver an efficient performance. Another bonus is having a 5kW you don't need an air brick (see FAQs). This stylish model can also be customised to your liking. You've chosen the colours for your walls, woodwork and furniture – wouldn't it be nice to have some options when you're choosing your stove? The designer Consort 5 comes in three colour finishes. So tailor it to your taste, and await the compliments...



Consort 5 with single door

See Technical Key - page 36 for more info.



The timeless little black stove

The chic, unique Compact 5 is the perfect dinner-party guest, creating an enticing focus for any room in your home



Created without compromise, the Compact 5 is undeniably lovely. The clean lines and elegant design make it perfect for a modern setting. At just 347cm deep, this stove can be fitted in almost anywhere you need a little extra warmth – and a little extra sociability. Why ‘without compromise’? Because the Compact 5 features all of our famous technologies: the ‘Cleanburn’ system to ensure ignition is prompt and efficient, a cool-touch riddling handle, and a hot airwash to keep the glass clean. All this and no need for an air brick in your room (see FAQs), makes the Compact 5 a very attractive proposition indeed...



Compact 5 with single door

See Technical Key - page 36 for more info.



Thought you couldn't fit one in?

The Slimline 5 is a slender version of our popular Consort 5. So you can squeeze it in where space is tight

The Slimline 5 is engineered with our usual excellence and all the usual features. It's built with Cleanburn – to ensure efficient ignition and less waste – plus a cool-touch riddling handle, easy-clean window, and multi-fuel capacity. The Slimline 5 has a slightly shallower fuel bed, so that it can be fitted in a smaller hearth with the bonus of no need for an air brick (see FAQs). And though she's small, she's fierce.



Slimline 5 with double door

See Technical Key - page 36 for more info.



A cosy night in

There's nothing quite like a real log fire. Welcome home.

Think you might not have the space or time for a wood-burning stove? Think again. With its particularly compact depth it's a big performer, producing a generous heat to your room. When you've just come in to a cold house, the Derwent is amazingly quick to warm up – thanks to the Tripleburn feature, which ignites fuel fast. Worrying about the expense of fuel? Don't be. We've made this stove one of our most efficient ever, making logs (or other approved fuel) last even longer. It's just so easy to enjoy a roaring fire all evening. Let the Derwent welcome you home.



Derwent with single door

See Technical Key - page 36 for more info.



Contemporary country chic

You don't need an open fireplace to recreate the modern country look. Our Inset stoves are designed to slide into a standard fireplace opening



'Modern country' is all about blending old and new – battered leather sofas with polished floorboards, geometric lines with woollen throws. Our Inset 5 and 7 stoves fit in perfectly. Designed with 19th-century charm and 21st-century technology, they're beautifully at home anywhere. Choose according to size – the 7 heat output is a little larger than the 5. Both are built with our award-winning styling and technology; a hot airwash keeps the glass clean. There's almost nothing old-fashioned about these models – apart from their charm...



Consort Inset 5 with double door

See Technical Key - page 36 for more info.



Slow down and take it easy...

The Slimline 9 makes life a little easier. Stack it with logs and set it on 'slow burn' - it's ready when you are



The mid-sized Slimline 9 can be left to smoulder as you slumber, so it's ready to warm cold feet at dawn. Despite its elegant stature, this model can hold 20" logs, giving you just a little longer between refuelling. With clever Cleanburn technology, the Slimline 9 gives a 5kW heat output and more. There's an added advantage of no need for an airbrick (see FAQs). And it requires virtually no attention in-between re-fueling: a hot airwash prevents carbon from forming on the inside of the glass. So there's nothing to clean and fewer logs to lug about – giving you more time to take it easy.



Slimline 9 with double door

See Technical Key - page 36 for more info.



The environmental choice

When every choice you make impacts the world around you, it's important to heat your home in a way that's efficient and eco-kind



The striking Consort 7 attracts compliments - it's designed with lots of old-fashioned character. But that's where the similarity ends, because its emissions are much lower than those from traditional stoves. You can choose to burn sustainably-sourced logs, or smokeless fuels - our unique technology guarantees a cleaner burn. How? Firstly, air jets ignite the gases which are released during combustion, so they burn away instead of flowing into the environment. In addition, our 'Cleanburn' system means that the heat given off by the fuel stays inside the stove for longer, being directed outwards rather than upwards. Your chimney stays cleaner, the environment stays healthier, and your home stays warmer.



Canopy option



Consort 7 with double door

See Technical Key - page 36 for more info.



You've worked hard today...

*So choose a stove to work for you.
The Consort 9 can heat your home,
warm your water, and toast your
crumpets.*



The Consort 9 is a real workhorse. It's designed to fit in most family fireplaces, maximising the heat output and warming your home from the bottom up. Like our other Consort models, it makes it easy for you to adjust the flow of heat. Even at full capacity, the Consort 9's eco-friendly technology means it emits fewer gases into our atmosphere. If you're looking for a hot water option, ask about the wraparound boiler stove. In short, whatever you ask of your stove, the Consort 9 reaches expectations. So you can concentrate... on relaxing.



Canopy options



Consort 9 with double door

See Technical Key - page 36 for more info.



Enjoy a cosy get-together.

Toasted marshmallows, flickering flames, and plenty of laughter - the ingredients for a truly memorable evening

Are you looking for a stove that can manage the demands of an extended family? The family-sized Consort 15 heats every inch of the largest room – whether it's packed with aunts and children, or just you stealing a moment of peace. And there's nothing quite like a real fire to make your house a home.

This heat giant can even provide enough hot water for the family – just ask about our optional wraparound boiler. However hard it's working, the Consort 15 is kinder to the environment thanks to our unique 'Cleanburn' system. So you can enjoy an old-fashioned family get-together, the modern way.



Canopy options



Consort 15 with double door

See Technical Key - page 36 for more info.



Perfect for open fireplaces

The compact Consort 4 swiftly warms up big spaces.

Make it the heart of your room and friends and family will soon gather around. With a glass door on both sides, the Consort 4 radiates heat very effectively. This cost-efficient stove belts out heat, making the most of every log (or other approved fuel). Choose from single-depth or double-depth, depending on your space and requirements. Both models feature our coveted Cleanburn technology (for lower emissions), and hot airwash keeping the glass clean. Easy to use and even easier to enjoy, the Consort 4 simply doesn't have a bad side...



Consort 4 double sided double depth stove

See Technical Key - page 36 for more info.



Do a double-take...

The Consort 7 is a modern masterpiece. Install it, admire it, and bask in the warmth.



Just look at those sleek lines and wide viewing windows. The double-sided Consort 7 makes a magnificent centrepiece for your family room. But don't just sit there looking at it. Light a match and enjoy a real fire. Piled with logs (or other approved fuel), the Consort 7 blasts out heat, and can also be adjusted to flicker away idly in the background. Cleanburn technology means that the Consort 7 is kinder to the environment than ever before, making it simply perfect for the modern household.



Consort 7 double sided single depth stove

See Technical Key - page 36 for more info.

Consort 9 Double Sided Stove



Make a grand statement of style.

This big, glorious beast of a stove will transform your living space.

Designed and engineered in Britain, this double-sided stove is hot property. Generously proportioned, it's both an efficient heating solution and a dramatic talking point. Luxuriate in grand design and modern technology: the Consort 9 takes quite some beating. With glass windows on both sides, the Consort 9 is perfect for a large open fireplace, where it will radiate warmth evenly through the room. Equipped with our signature Cleanburn technology, the Consort 9 boasts low emissions and a substantial outputs (see the tech key on page 36). Now that's given you something to talk about.



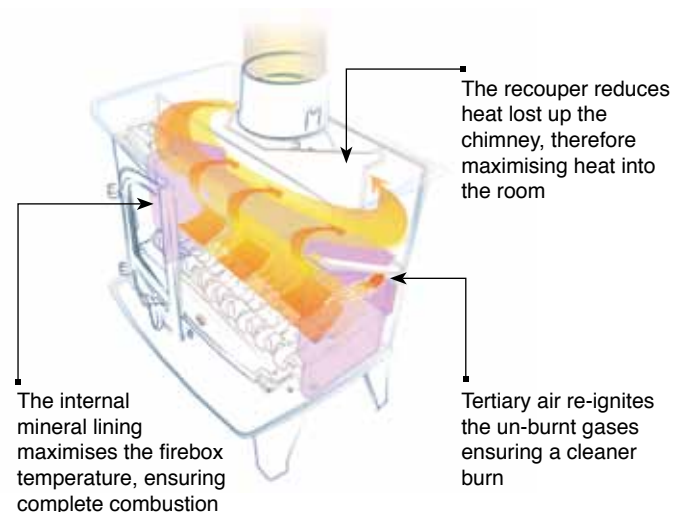
See Technical Key - page 36 for more info.



Consort 9 double sided single depth stove

Parkray cleanburn technology

Consort stoves incorporate the new Parkray Cleanburn technology. The term 'Cleanburn' means that the stoves are more eco-friendly and efficient than conventional stoves, contributing to a cleaner environment.



Cleanburn technology

With incredibly efficient burning of the fuel, this results in an increased heat output, less smoke and a cleaner environment see diagram above.

Exceptionally efficient

Due to the Parkray Cleanburn technology, all stoves in the Parkray range burn exceptionally efficiently and cleanly.

From wood to multi-fuel with a single movement

The integral grate can be changed from wood setting to multi-fuel, with the cold-handled riddling tool.

Safe and efficient overnight burning

By reducing the air inflow to an absolute minimum, the fire will gently smoulder and remain alight throughout the night. When required, the fire will come to life by simply increasing the air flow into the stove.

Dust free, safe and easy riddling

By simply moving the riddling tool backwards and forwards, which moves the grate open and closed, the stove riddles safely with a minimum of effort. This is undertaken with the doors closed and is completely dust free

Interchangeable flue outlets

All the stoves in the Parkray range can be flued from either the top or the rear of the stove.



Easy access for chimney sweeping

The stoves feature a removable throat plate, giving full and easy access for sweeping the chimney.

Internal lining system

The new internal lining system maximises the firebox temperature, ensuring complete combustion

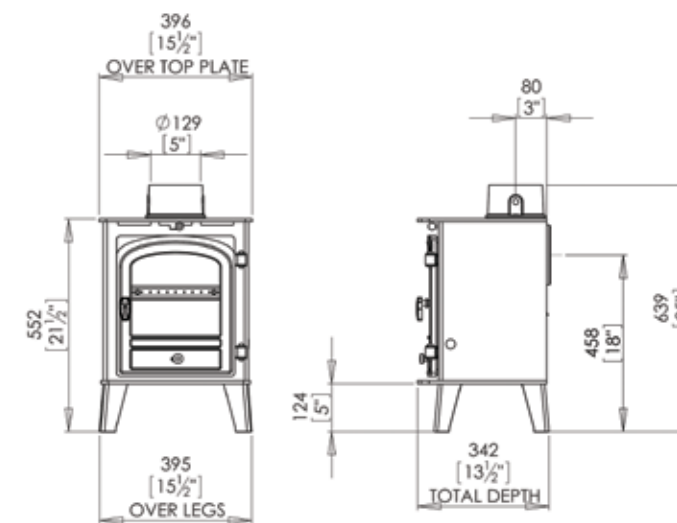
Cold-handled riddling tool

The cold handled riddling tool can be used for opening and closing the doors, riddling the grate, grate adjustment and easy removal of the ash pan.

Thermostat

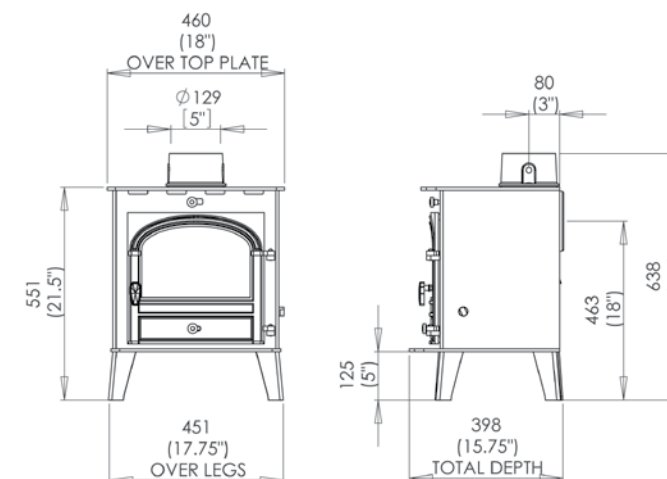
An optional thermostat is available on all central heating models

Consort 4, page 2



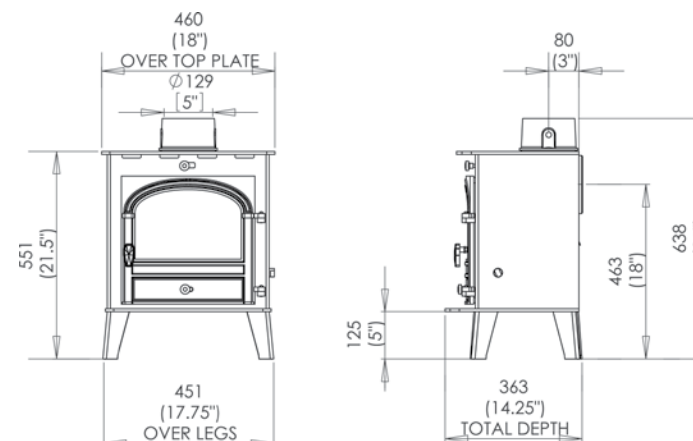
✓ CE tested and approved at 3 - 5kW

Consort 5, page 4



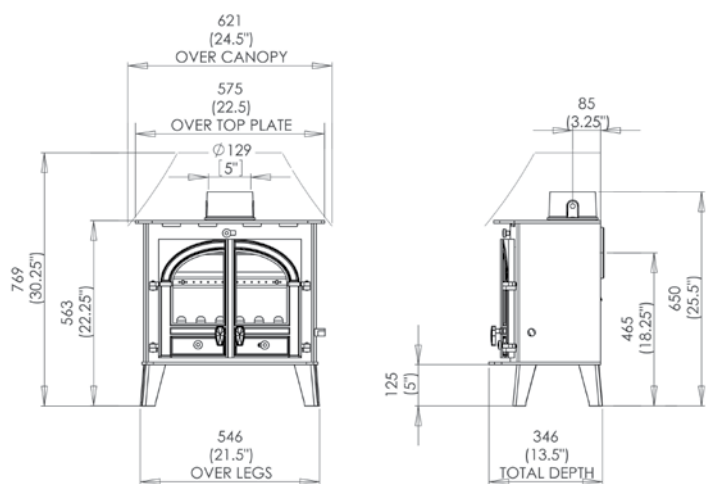
✓ Heat output of 5kW

Compact 5, page 6



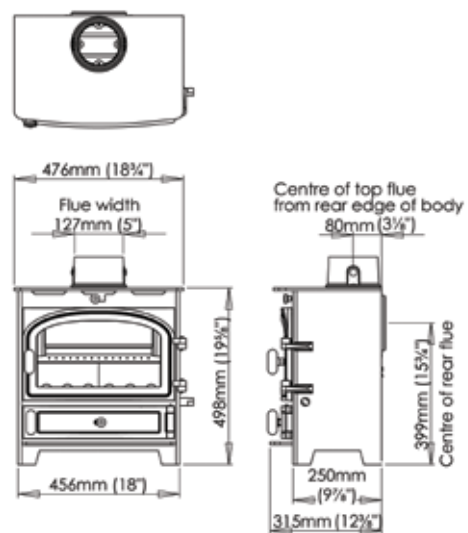
✓ Heat output of 5kW

Slimline 5, page 8



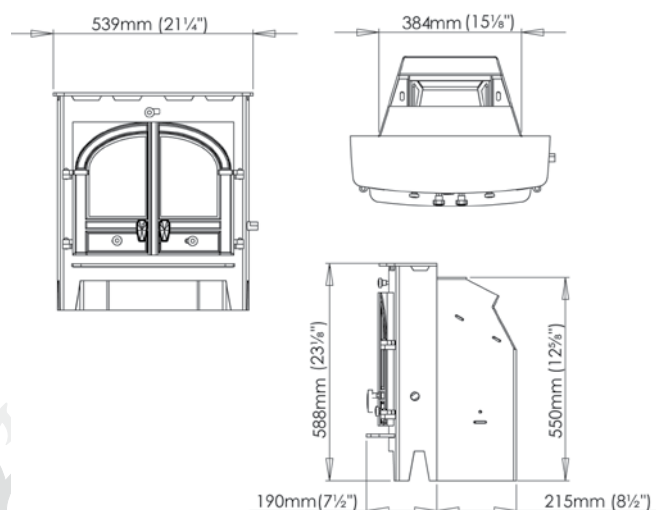
✓ Heat output of 5kW

Derwent, page 10



✓ CE tested and approved at 5kW output

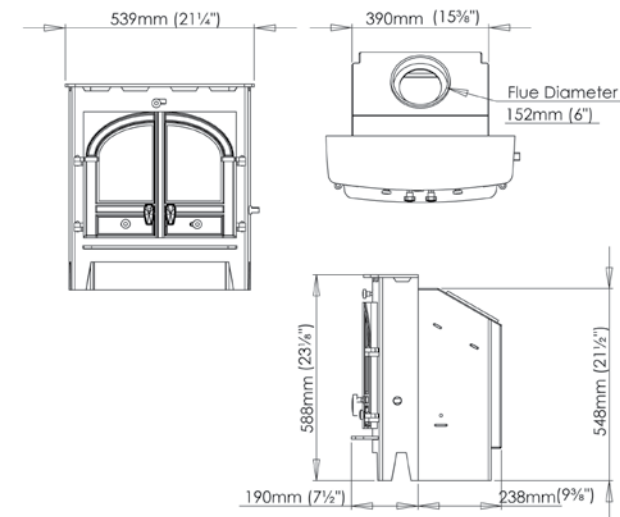
Inset 5, page 12



✓ Heat output of 3-4kW

NB. Flue adaptors are available as an optional extra

Inset 7, page 12



✓ Heat output of 5kW

NB. Flue adaptors are available as an optional extra

Important information - Consort Inset

Inset 5's are designed to fit ONLY with a chairbrick
Inset 7's are designed to fit WITHOUT a chairbrick

All inset installations must have a 'Throat Forming Lintel', if a 'Builders Opening Lintel' is present then this will have to be modified for these units to be fitted.

If you intend on fitting the flue adapter with the inset 5, please be aware that the top of the chairbrick needs to be removed. Any queries on suitable installations please contact your local dealer.

The clearance distances to combustible material for the Inset 5 are:
315mm from the side of the stove and 460mm from the top.
This equates to : 1050mm from the floor and 569mm either side of the centreline of the stove.

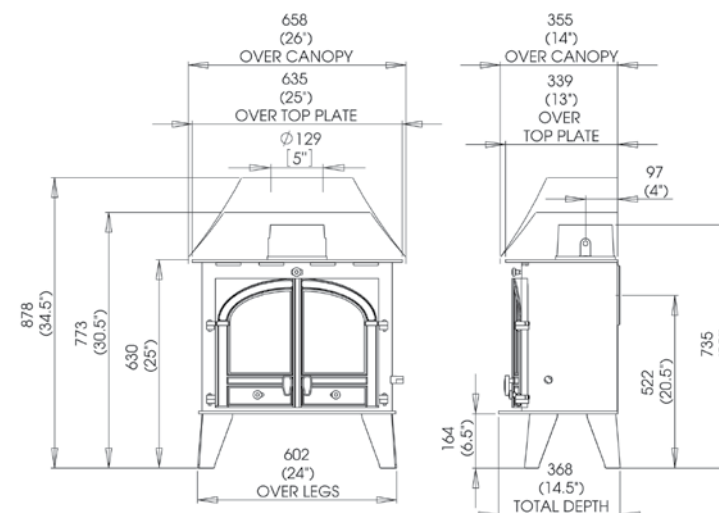
The clearance distances to combustible material for the Inset 7 are:
160mm from the side of the stove and 350mm from the top.

This equates to: 938mm from the floor and 429.5mm either side of the centreline of the stove.

There are many fire surrounds on the market that are only suitable for gas or electric inset fires.

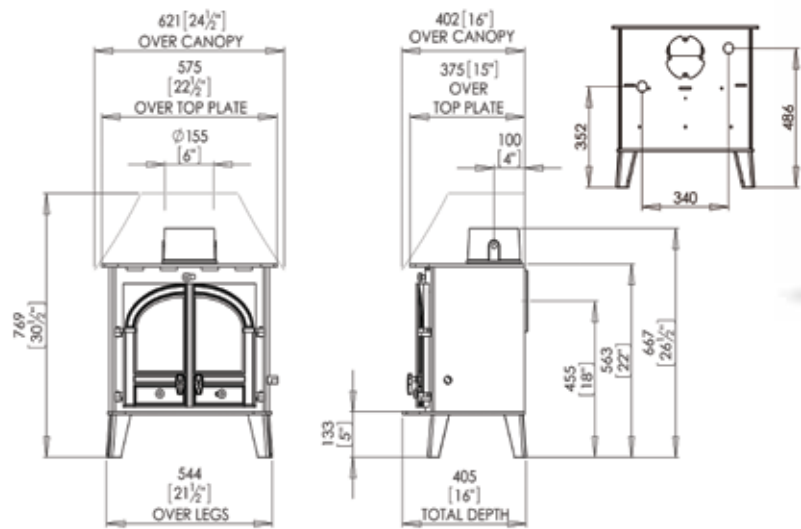
Suitable surrounds for solid fuel inset appliances are usually cut in 3 sections and slabbed. For advice on a suitable surround contact your local dealer.

Consort Slimline 9, page 14

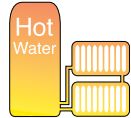


✓ Heat output of 5kW

Consort 7, page 16



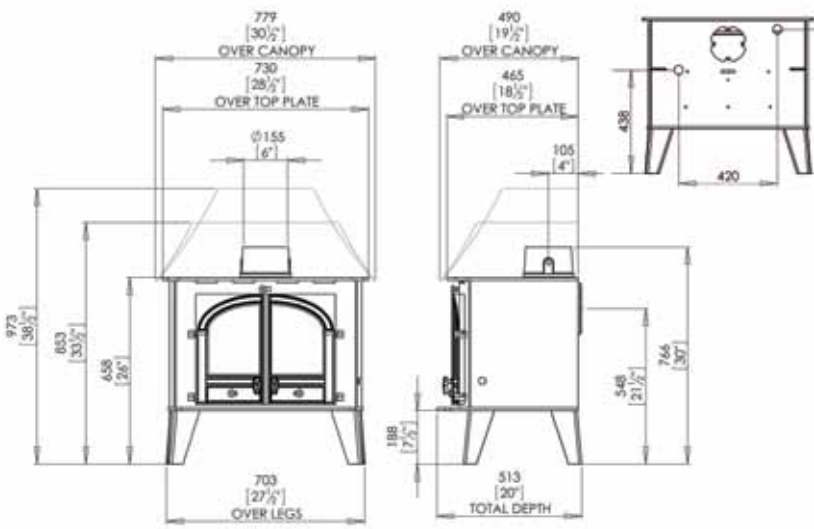
Boiler option Consort 7
Clip-in Boiler 13,600 BTU's Output
dependent on fuel load *
1.5kW heat output to the room
4kW heat to the boiler *



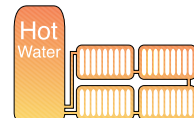
✓ CE tested and approved at 5.5 - 6.5kW output

* Recommend a radiator is in the same room as the stove

Consort 15, page 20



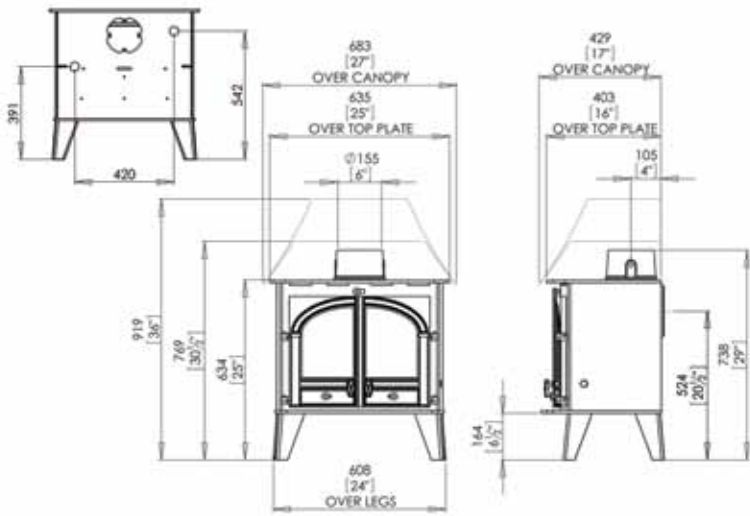
Boiler option 2 Consort 15
Clip-in Boiler 23,950 BTU's
Output 4.5kW heat output to the
room 7.7kW heat to the boiler *



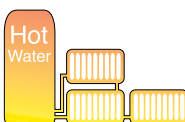
✓ CE tested and approved at 9 - 11.5kW output

* Recommend a radiator is in the same room as the stove

Consort 9, page 18



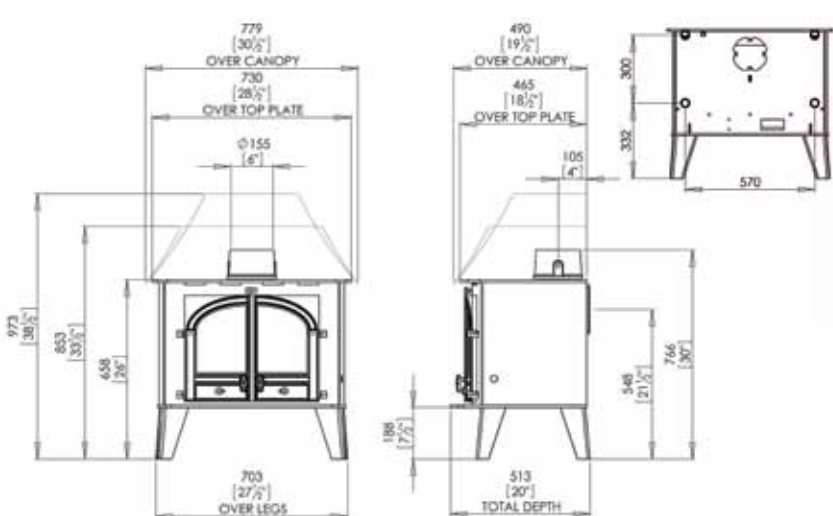
Boiler option 2 Consort 9
Clip-in Boiler 18,750 BTU's Output
2.5kW heat output to the room
5.5kW heat to the boiler *



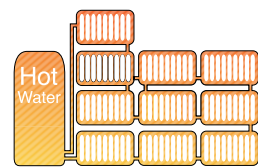
✓ CE tested and approved at 7.5 - 9kW output

* Recommend a radiator is in the same room as the stove

Consort 15, page 20 (Wraparound Boiler Option)

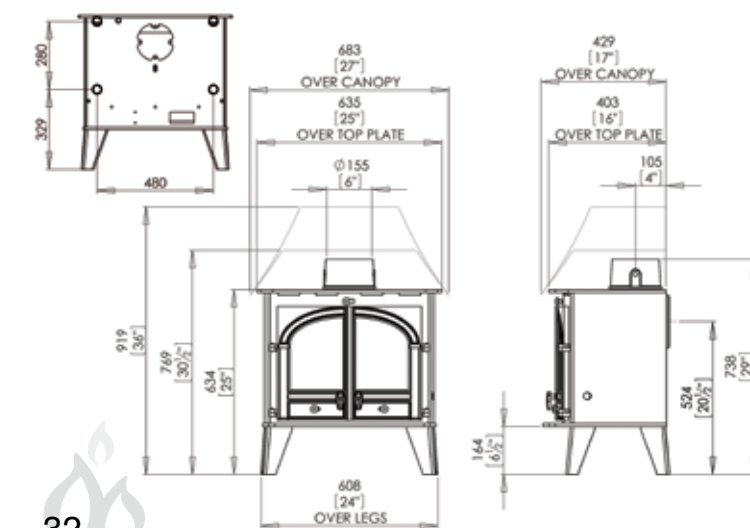


Boiler option 1 Consort 15
Wraparound Boiler 44,000 BTU's
Output 3kW heat output to the
room 13kW heat to the boiler *

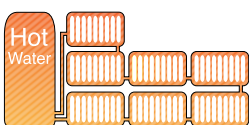


✓ Thermostat option available

Consort 9, page 18 (Wraparound Boiler Option)

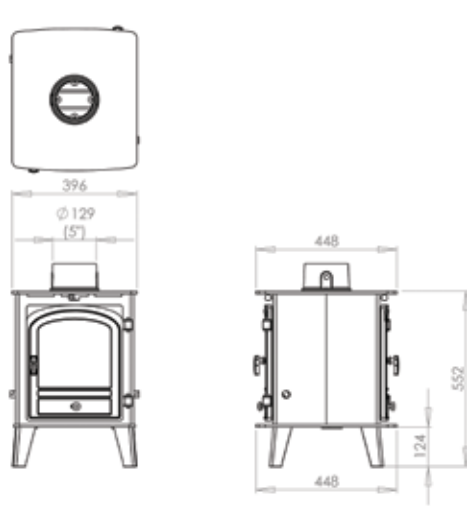


Boiler option 1 Consort 9
Wraparound Boiler 29,000 BTU's
Output 2.5kW heat output to the
room 8.5kW heat to the boiler *

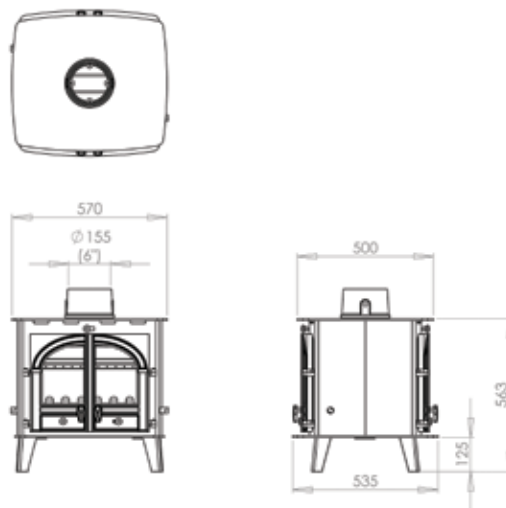
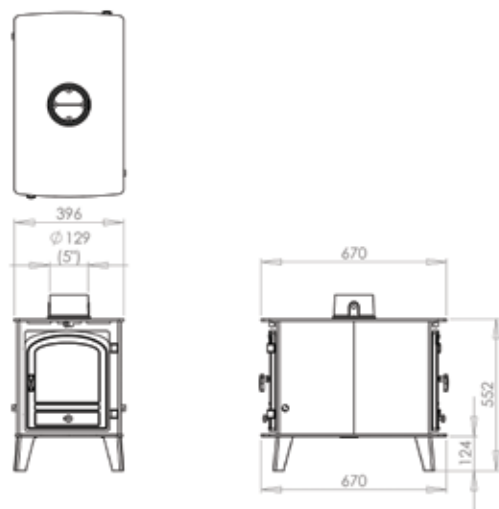


✓ Thermostat option available

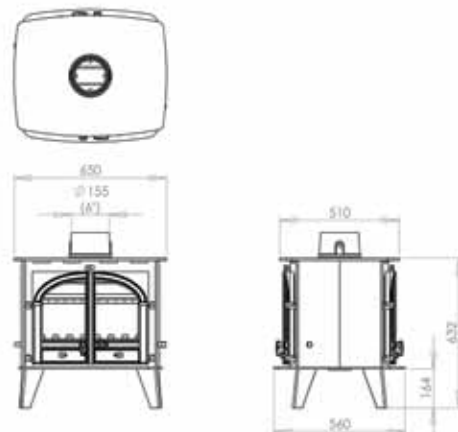
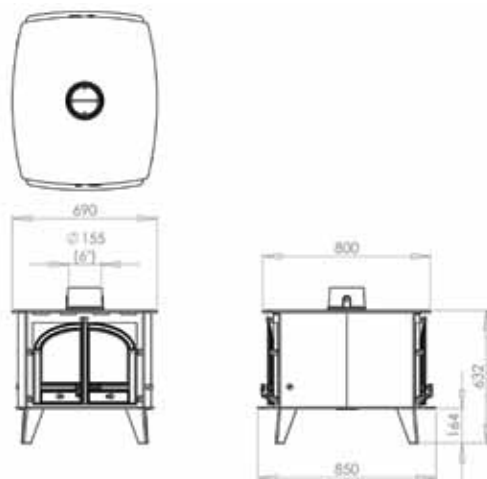
Consort 4 Double Sided, SD*, Page 22



* SD Single Depth | DD Double Depth



✓ Single door option available



* SD Single Depth | DD Double Depth ✓ Single door option available

FAQs

DOES PARKRAY SELL DIRECT TO THE PUBLIC?

No; we have a network of trusted dealers with showrooms throughout the UK and Ireland. To locate your nearest dealer, drop us a quick email at info@parkray-stoves.co.uk, or telephone 0044 (0) 1392 841004.

HOW DO I GET MY NEW STOVE INSTALLED?

Installation must be carried out by a Hetas-approved or similarly qualified engineer and must be in accordance with Building Regulations. To investigate the suitability of your chimney, contact your local dealer, who will be pleased to arrange a site visit. This is very important, because the condition of your chimney will determine how well your stove performs; a poor chimney system will affect its efficiency. Any existing flue must be swept and inspected before installation of the stove. All multi-fuel/wood burners must be installed in a class 1 chimney.

WHAT IF I DON'T HAVE A CHIMNEY?

There are many different flue systems available. Please contact your local dealer/ flue installer, who will be able to give you personal advice.

CAN I CONNECT TWO STOVES TO ONE FLUE SYSTEM?

No. All Parkray Stoves must be individually flued.

MY STOVE HAS A 6" FLUE COLLAR; CAN I INSTALL IT ON A 5" FLUE?

No. The internal diameter of the flue must be no smaller than the appliance flue collar for its entire length. If burning wood on a stove with a 5" outlet a 6" liner must be fitted.

DOES MY CHIMNEY NEED LINING?

This is to be decided by your qualified Engineer.

DO I NEED AN AIR BRICK?

Yes if the output is above 5kw. Newer houses built after 2008 may require additional ventilation even with a below 5kw appliance depending on their air leakage rate – The installer is responsible for the decision whether an air brick is necessary for your property.

WHAT TYPE OF FUEL CAN I USE?

The quality of fuel will dictate the performance of your Parkray Stove.

WOODBURNING

Burn only dry, well seasoned wood. For best results, use dry wood, with a moisture content of less than 20%, which has been cut, split and stacked for at least 12 months. This is advertised as 'seasoned' wood. Burning wet or unseasoned wood will create tar deposits in the stove and chimney and won't produce a satisfactory heat output. Wood burns best on a bed of ash and it is therefore only necessary to remove surplus ash from the stove occasionally.

PEAT

Only to be used in turf or brick form, but the moisture content must be very low.

SMOKELESS FUEL BURNING

Anthracite is an approved natural smokeless fuel (not processed) but can vary greatly in quality and performance. It generally requires excellent air supply to maintain maximum performance and with experience we would suggest that it is used in conjunction with other approved manufactured smokeless fuels as per the HETAS approved list.

Please visit www.hetas.co.uk for an up to date list of approved Manufactured Smokeless Fuels suitable for closed appliances.

Only authorised smokeless fuels may be used in smoke control areas.

Warning! - Petroleum coke fuels or household waste must not be burnt on our appliances. Should any difficulties arise over fuel quality or suitability, consult your approved coal merchant or the Solid Fuel Advisory Service – Telephone 0845 6014406

CAN I BURN WOOD ON MY MULTI-FUEL GRATE?

Yes. All Parkray multi-fuel appliances are capable of burning wood.

CAN I SWEEP MY CHIMNEY THROUGH THE STOVE?

Yes – it is possible to sweep the chimney through the stove.

A clip-in boiler installation should have an additional means of access to the flue system to allow cleaning – usually a soot door in the first length of flue pipe.

CAN I RUN MY BOILER STOVE DISCONNECTED?

No. The stove should not be fired with the boiler disconnected or empty, as this could cause serious damage to the appliance.

HOW MUCH SPACE WILL MY STOVE NEED?

All our units require a clearance of 150mm (6") on either side, and 50mm (2") clear at the back. The hearth should extend 300mm (12") in front of the appliance (From the door opening). All of these clearance specifications are for non combustible materials.

SPARK GUARDS

Our multi-fuel stoves have been tested and CE certified by an approved independent testing facility, to the current CE legislation. In addition to this all of our stoves exceed the minimum efficiency requirements as set out by the English & Welsh Building Regulations part L. In order to achieve this, all of our stoves are tested as closed appliances and therefore must be documented accordingly. Some customers choose to run appliances with the doors open. In doing this they accept that the operating characteristics of the stove might change. This is a personal choice and it is the reason that we supply Spark Guards, as an option. If our stoves are run with the doors open then the operation of the flue, ventilation to the room and the quality of the fuel will need to be very good, in order to prevent smoke spillage into the room. Not all installations will be able to achieve this.

Technical key

	Derwent	Inset	Inset	Consort	Consort 4	Consort 4	Consort 5	Compact 5		Consort 5	Consort 7	Consort 7	Consort 9	Consort 9	Consort 9	Consort 9	Consort 15	Consort 9	Consort 15
		5	7	4	Double Single	Double Double	Standard			Slimline		Double Single	Slimline		Double Single	Double Double		Central Heating	Central Heating
Output normal/ max kw	4.5-5kw	3-4 kw	5kw	3-5kw	5-5.5kw	10kw	4-5kw	4.6-5kw		4-5kw	5-7kw	5-7kw	5kw	7.5 - 9kw	7.5 - 9kw	11kw	9-11.5kw	1.7 - 2.5kw	3.7-5.3
Efficiency on wood %	76.8	71.27	76.3	72.8	72.7	75.4	78.3	76		72.5	75.9	n/a	73	78.9	74.3	79	78.6	73.4	73.6
Flat Top	✓	✓	✓	✓	✓	✓	✓	✓		✓	✓	✓	✓	✓	✓	✓	✓	✓	✓
Low Canopy option	~	~	~	~	~	~	~	~		•	•	~	•	•	~	~	•	•	•
High Canopy Option	~	~	~	~	~	~	~	~		•	~	~	•	•	~	~	•	•	•
Double door option	~	✓	✓	~	~	~	~	~		✓	✓	✓	✓	✓	✓	✓	✓	✓	✓
Single door option	✓	•	•	✓	✓	✓	✓	✓		•	•	•	•	•	•	•	•	•	•
Multi Fuel Option	✓	✓	✓	✓	✓	✓	✓	✓		✓	✓	✓	✓	✓	✓	✓	✓	✓	✓
Wood Burning only option	~	~	~	•	•	•	•	•		•	•	•	•	•	•	•	•	•	•
Black knob set	✓	✓	✓	✓	✓	✓	✓	✓		✓	✓	✓	✓	✓	✓	✓	✓	✓	✓
Flue Damper	•	~	~	•	•	•	•	•		•	•	•	•	•	•	•	•	•	•
Sparkguard ³	~	~	~	~	~	~	~	~		•	•	•	•	•	•	•	•	•	•
Multi fuel Extention	~	~	~	•	•	•	•	•		•	•	•	•	•	•	•	•	•	•
Coloured finish	•	•	•	•	•	•	•	•		•	•	•	•	•	•	•	•	•	•
Non Standard Leg Height ¹	~	~	~	•	•	•	•	•		•	•	•	•	•	•	•	•	•	•
Clip in Boiler Option ²	~	~	~	~	~	~	~	~		~	•	~	~	•	~	~	•	~	~
Ventilation (mm²) ⁴	~	~	~	~	225	2750	~	~		~	825	825	~	2255	2145	3520	4950	2255	4950
Leg Lengths	1 1/2" - 138mm	~	~	5" - 127mm	5" - 127mm	5" - 127mm	5" - 127mm	5" - 127mm		5" - 127mm	6" - 152mm	6" - 152mm	6" - 152mm	6" - 152mm	6" - 152mm	6" - 152mm	6" - 152mm	6" - 152mm	7" - 178mm
Log Length (Approx)	15 3/4 - 400mm	8" - 200mm	12 1/4 - 310mm	11" - 280mm	11" - 280mm	11" - 280mm	11"- 280mm	13" - 300mm		16" - 405mm	15" - 380mm	15" - 380mm	19 3/4 - 500mm	19 3/4 - 500mm	19 3/4 - 500mm	19 3/4 - 500mm	19 3/4 - 500mm	19 3/4 - 500mm	19 3/4 - 500mm



✓ = standard
• = option
~ = not available

1. Optional Leg Height - you specify the size, we make to order
2. Clip in Boiler model 1.5kw to room 4.0kw (13,600btu) to water
3. Sparkguard - only available on double door options
4. Please check FAQs for further advice.

Parkray options

Your new stove is ready to be customised. Would you like double doors, or a colour to match your interior?



Optional flue damper



Optional flue gather box



Optional spark guard

High or low canopy: these charming features enhance the traditional appearance of your stove, and also help heat to disperse evenly through the room. Single or double doors: While a single offers more viewing clarity, a double door offers a more traditional style.

Optional flue damper and gather box: use the damper to reduce the air inflow and let your stove burn slowly overnight when burning wood. The flue gather channels smoke into the flue; check whether you have or need one.



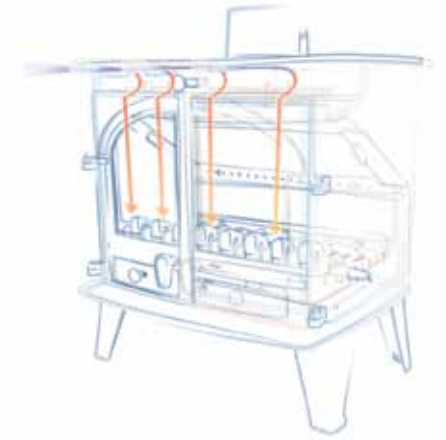
Make it unique: choose a subtle, Cloudy Blue or Forest green finish for your stove.
(Colours shown may differ to actual shades.)

Alternative colours are available contact your dealer for a colour chart.

Hot Airwash

The airwash ensures the glass is kept clean

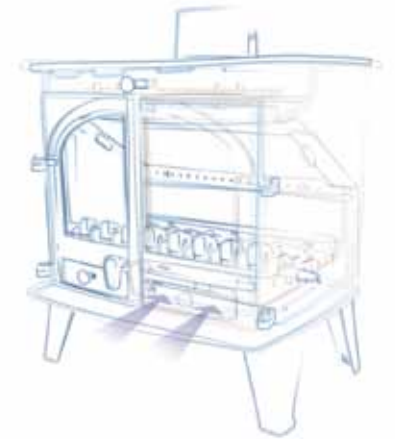
The airwash is achieved by air being drawn into the top of the stove and heated in the central air chamber before being directed down behind the glass door, creating a screen between the fire and the glass. Smoke or combustion particles do not come into contact with the glass, leaving it clean to see through.



Solid Fuel

Optimum solid fuel burning conditions

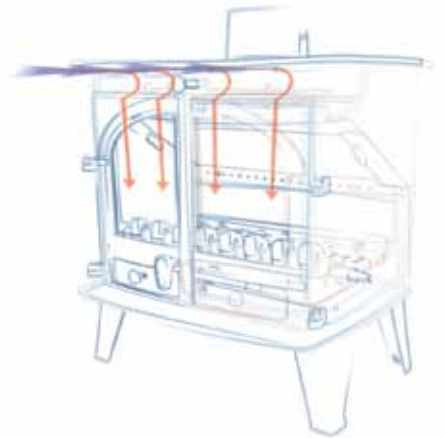
When burning coal and for easy lighting of the stove the grate is changed to the open position by a single turn of the handle. Air can then be directed under the open grate and into the heart of the fire - the optimum conditions for burning solid fuel.



Woodburning

Optimum woodburning conditions

For efficient woodburning the hot 'airwash' is directed down the stove door and into the heart of the wood fire, this ensures complete combustion which helps to keep the chimney clean. When the grate is in the closed position creating a flat base, this allows a deep bed of ash to build up - the optimum conditions for burning wood.





Looking for something different? Consider our Inset stove range. Speak to your local parkray dealer or visit our website at www.parkray.co.uk for more details.



Inset **Central Heating Collection**

Please note: The outputs of the new stoves within the Consort range have been calculated in-house, awaiting independent results, therefore outputs may vary. Heat outputs are dependent on fuel load and installation parameters. Overnight burning is dependent on fire box size, fuel load etc. Parkray has a policy of continuous product improvement and therefore reserves the right to change specifications and designs at any time without prior notice.

Parkray strongly recommends that the suitability of any installation should firstly be agreed with a HETAS qualified installer or similarly competent professional, to ensure compliance with the recent changes to the Building Regulations. Parkray will not be held responsible for any losses, however arising, from inappropriate installations by unqualified or non-competent installers.

An inappropriate installation may also invalidate claims made under a manufacturer's warranty or guarantee.



Your Parkray dealer



Parkray Limited

Unit 6, Old Mill Industrial Estate, Stoke Canon, Devon EX5 4RJ
www.parkray-stoves.co.uk info@parkray.co.uk